

PRINT NORTH

An exhibition of contemporary Northern printmakers
2nd to 16th September 2023



Saul Hay
Gallery

Saul Hay Gallery is very proud to present

PRINT NORTH

PRINT NORTH will showcase seventeen renowned artists, all of whom are from or work in the North of England, and have been selected for their innovative use of both traditional and contemporary printmaking techniques.

Featuring

John Angus,

Paulette Bansal,

Suzanne Bethell,

Neil Bousfield,

Louisa Boyd,

Joey Collins,

Kathryn Desforges,

Anne Desmet R.A,

Julia Midgley R.E,

Lindsey Moran,

Nigel Morris,

John Pedder,

Clare Phelan,

KJ Pocock,

Anthony Ratcliffe MAFA,

Lucy May Schofield,

Alan Stones

and Theresa Taylor.

Please join us at our Preview Evening on

Friday 1st September from 5 to 9pm

The exhibition is open 10.30 to 6.00 Tuesday to Saturday

“Recent years have seen a new flourishing of contemporary printmaking. Artists have embraced new technologies as well as embracing and developing ancient, traditional techniques.

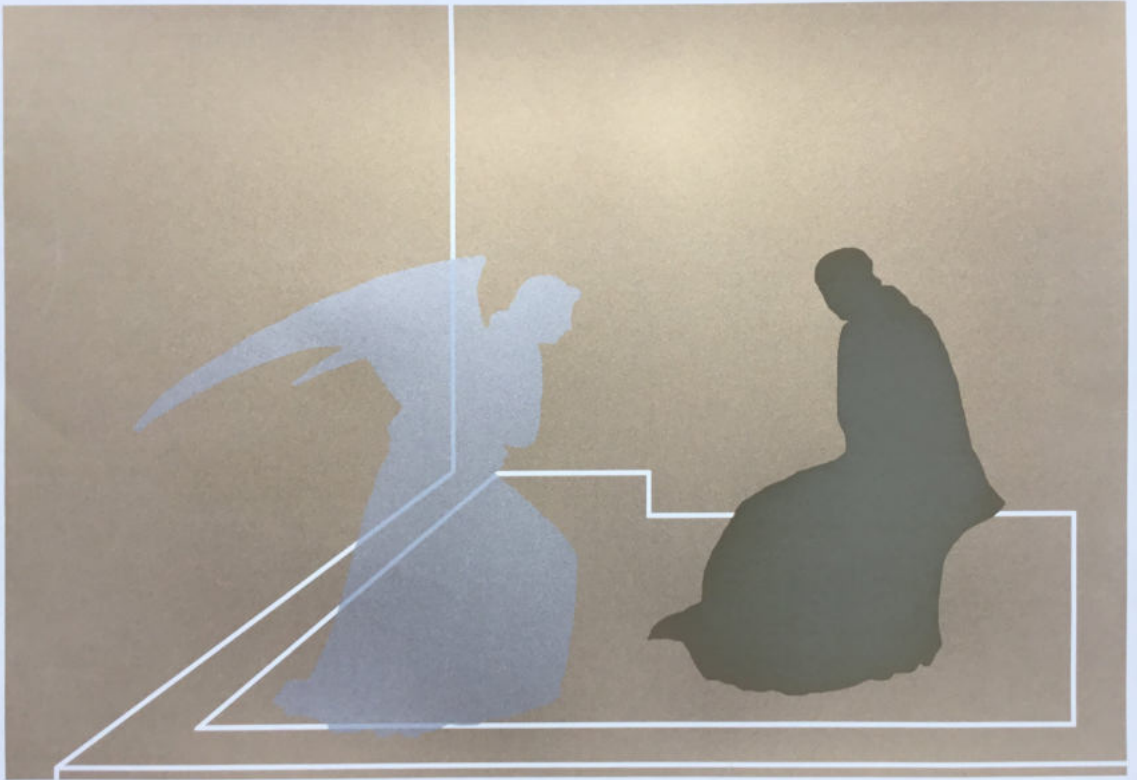
PRINT NORTH showcases this vibrancy in contemporary printmaking with work by seventeen artists whose practice or roots are in the north of England.”

Ian Hay, Director of Saul Hay Gallery



John Angus

A Meeting of Earth and Aether [after Cr] (yellow)
Screenprint in yellow and silver acrylic, and river mud
On Somerset tub-sized paper. Edition of 5
51x76cm
58x82cm framed
£600 framed
£450 unframed



John Angus

A Meeting of Earth and Aether [after FrA] (gold)
Screenprint in gold and silver acrylic, and river mud
On Somerset tub-sized paper. Edition of 8
76x51cm
82x58cm framed
£600 framed
£450 unframed



John Angus

Portrait E2
Screenprint in acrylic on Arches paper
Edition of 10
63x90cm
64.5x92cm in Perspex box frame
£700
Unframed £400



Paulette Bansal

Sn I
Etching with chine colle
22x31cm framed
£90 framed
£65 unframed



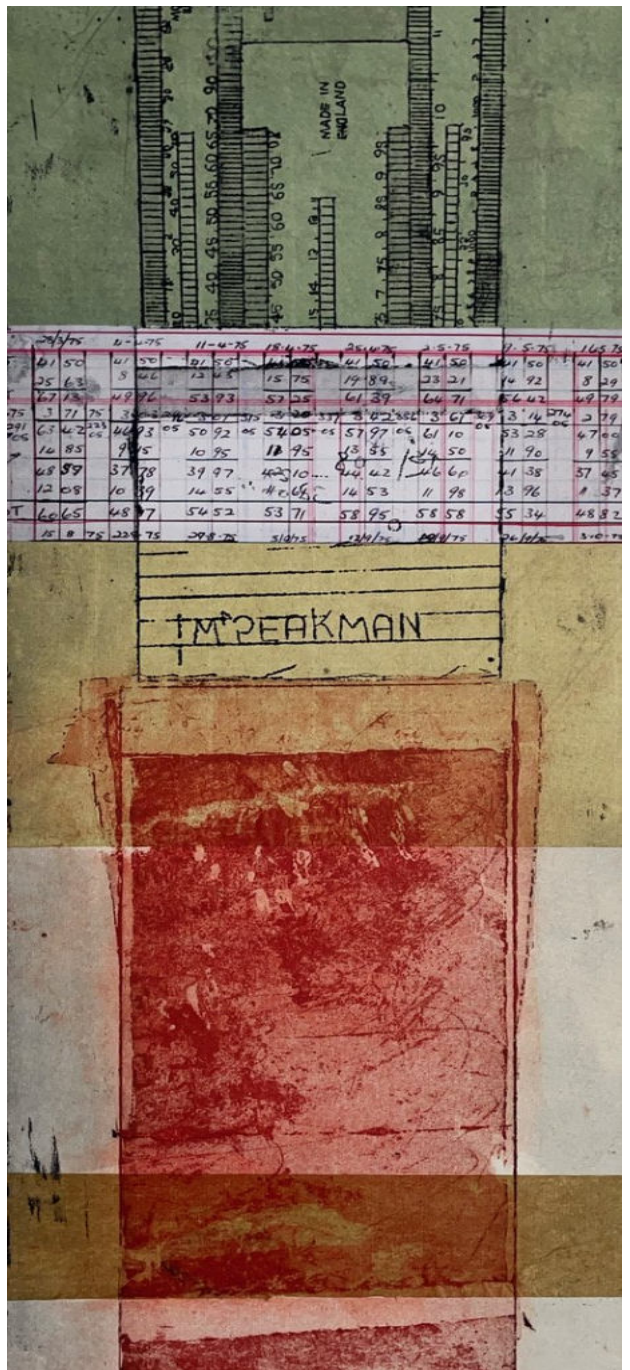
Paulette Bansal

Sn XV
Collograph with chine colle
22x31cm framed
£90 framed
£65 unframed



Paulette Bansal

Encasement
Etching with chine colle. Varied edition of 5
33x60cm framed
£275 framed
£200 unframed



Paulette Bansal

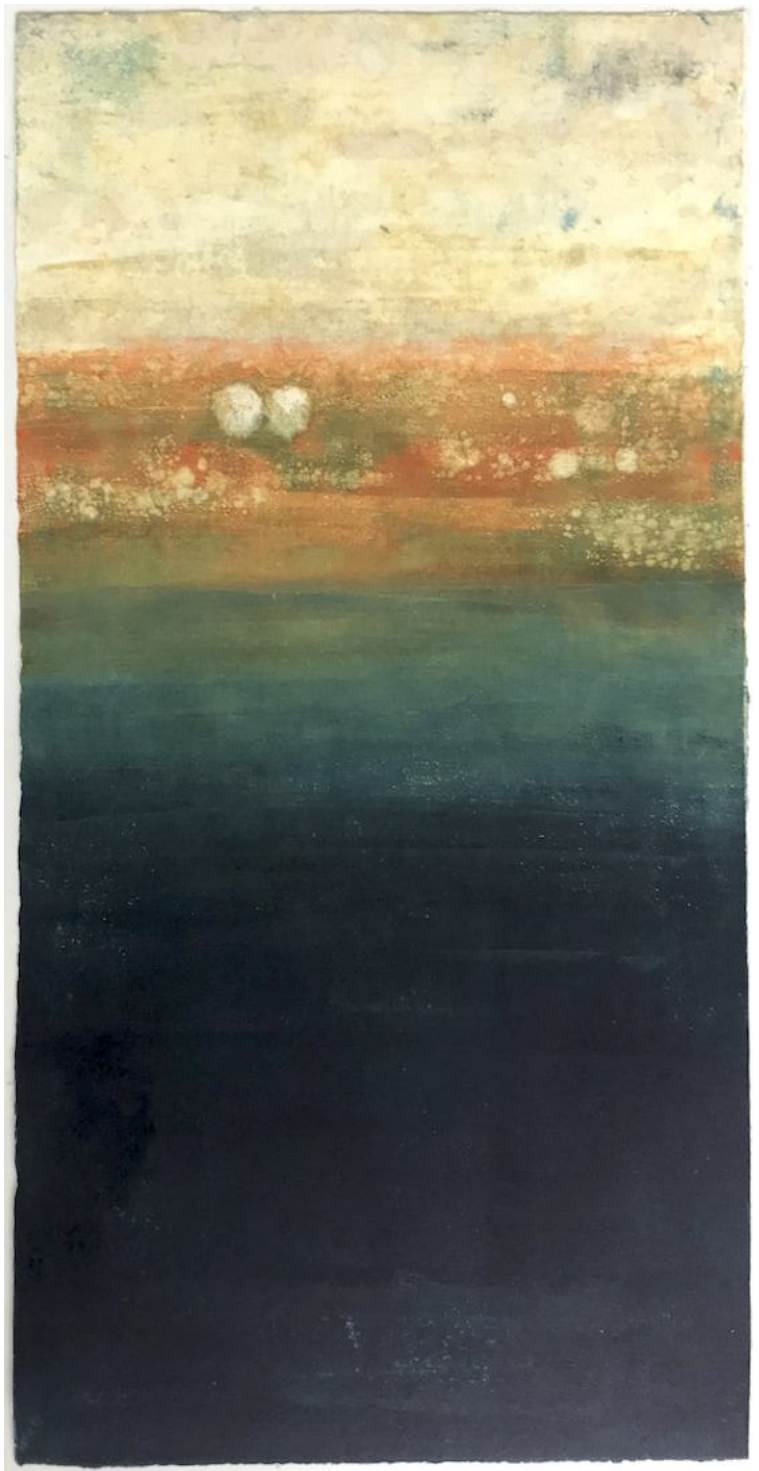
Calculate VE
 Etching with chine colle. Varied edition of 5
 33x69cm framed
 £275 framed
 £200 unframed



Suzanne Bethell
Still 1
Monotype with collage on Zerkall paper
30x54cm
£325 framed



Suzanne Bethell
Still 2
Monotype with collage on Zerkall paper
30x54cm
£325 framed



Suzanne Bethell
Still 3
Monotype surface mounted on Zerkall paper
30x54cm
£325 framed



Neil Bousfield

Marsh Lands

Wood engraving

Image size: 12 x 24 cm

Paper size: 26.5 x 36.5 cm

Frame size: 31.5 x 42.5 cm

Edition of 50

£395 framed no.18 of 50

£295 unframed



Neil Bousfield

Palimpsest Landscape

Wood engraving

Image size: 12 x 24 cm

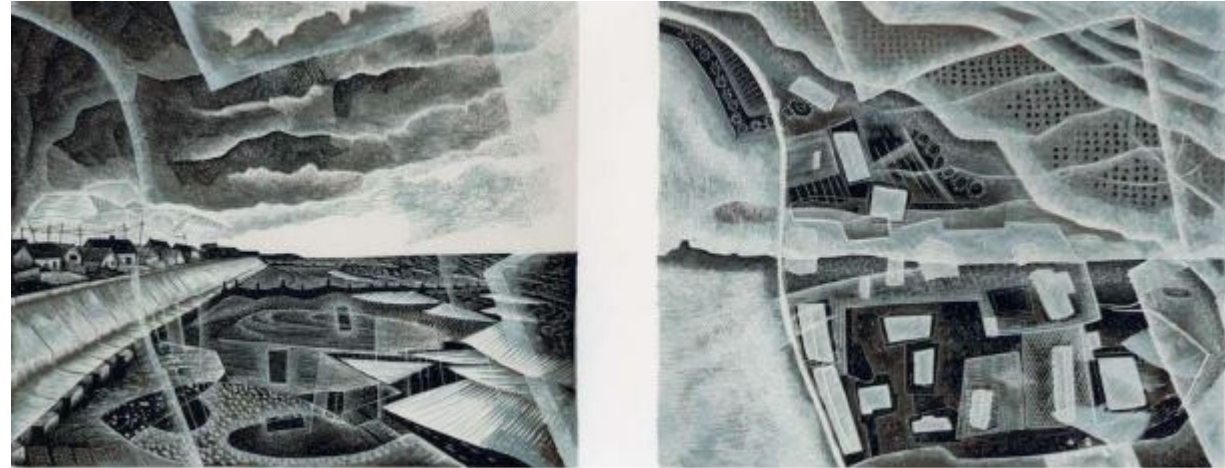
Paper size: 26.5 x 36.5 cm

Frame size: 31.5 x 42.5 cm

Edition of 50

£395 framed no.18 of 50

£295 unframed



Neil Bousfield

Walcott: Vanishing Land (diptych)

Multiple block engraving

Image size: 10 x 26 cm - diptych 2 @ 10 x 12 cm

Paper size: 26.5 x 36.5 cm

Frame size: 31.5 x 46 cm

Edition of 50

£400 framed no.15 of 50

£300 unframed



Saul Hay Gallery offers the 'Own Art' scheme, which allows you to split payments over ten months interest-free, making quality art more accessible.

For example, for a £500 artwork you pay just £50 per month over ten months.



Louisa Boyd

Polychromatic Flare
Original etching and marbled paper,
84 x 58cm Framed in white,
£1200 framed



Louisa Boyd

Illuminated Elements
Original Etching and marbled paper sculpture
80x 80cm
£4000 framed



Joey Collins

Black Blue. No. 1

24 layer Silk screen mono print on Somerset Satin 300gsm paper

76x56cm unframed

83x64cm framed

£635 framed

£475 unframed



Joey Collins

Fade. No. 1

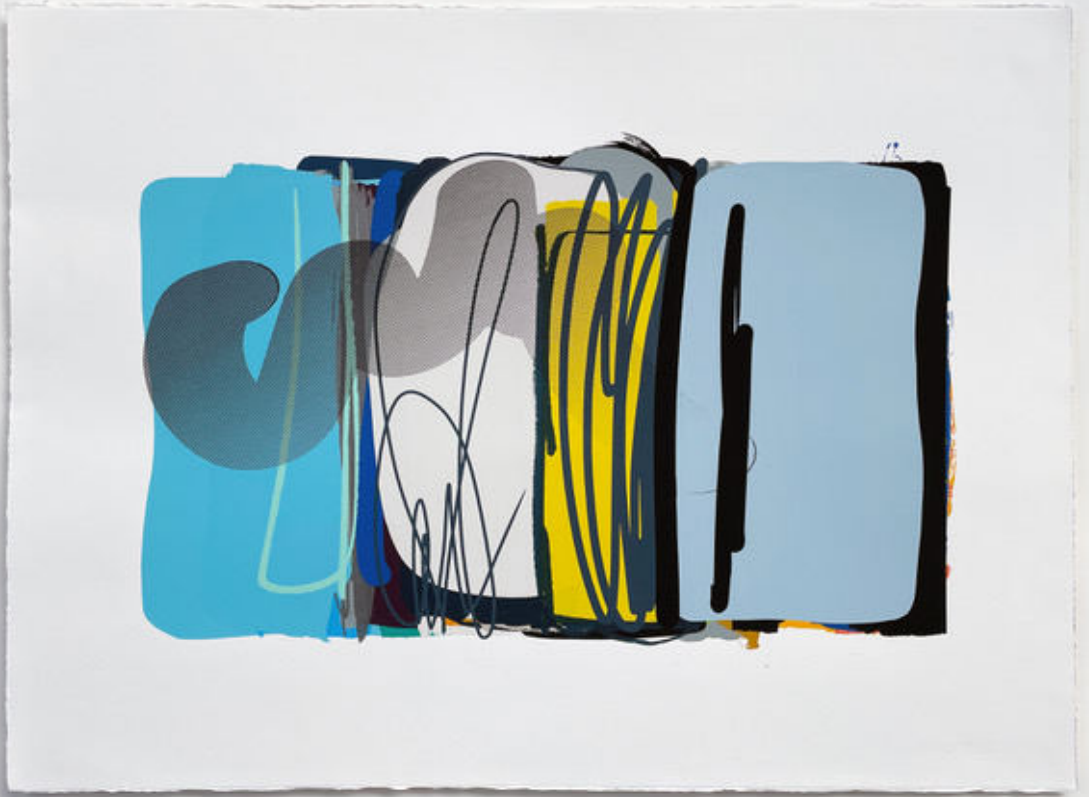
22 layer Silk screen mono print on Somerset Satin 300gsm paper

76x56cm unframed

83x64cm framed

£635 framed

£475 unframed



Joey Collins

Earth. No. 5

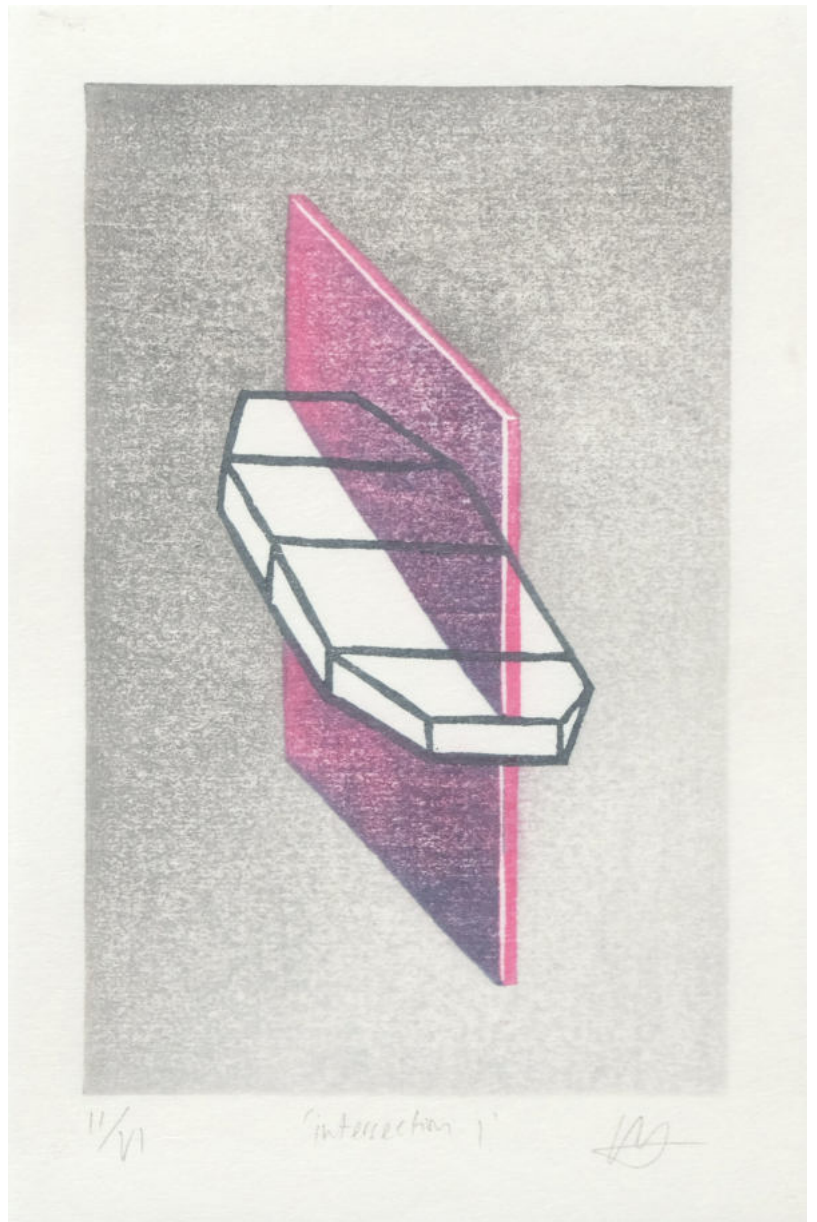
32 layer Silk screen mono print on Somerset Satin 300gsm paper

76x56cm unframed

83x64cm framed

£635 framed

£475 unframed



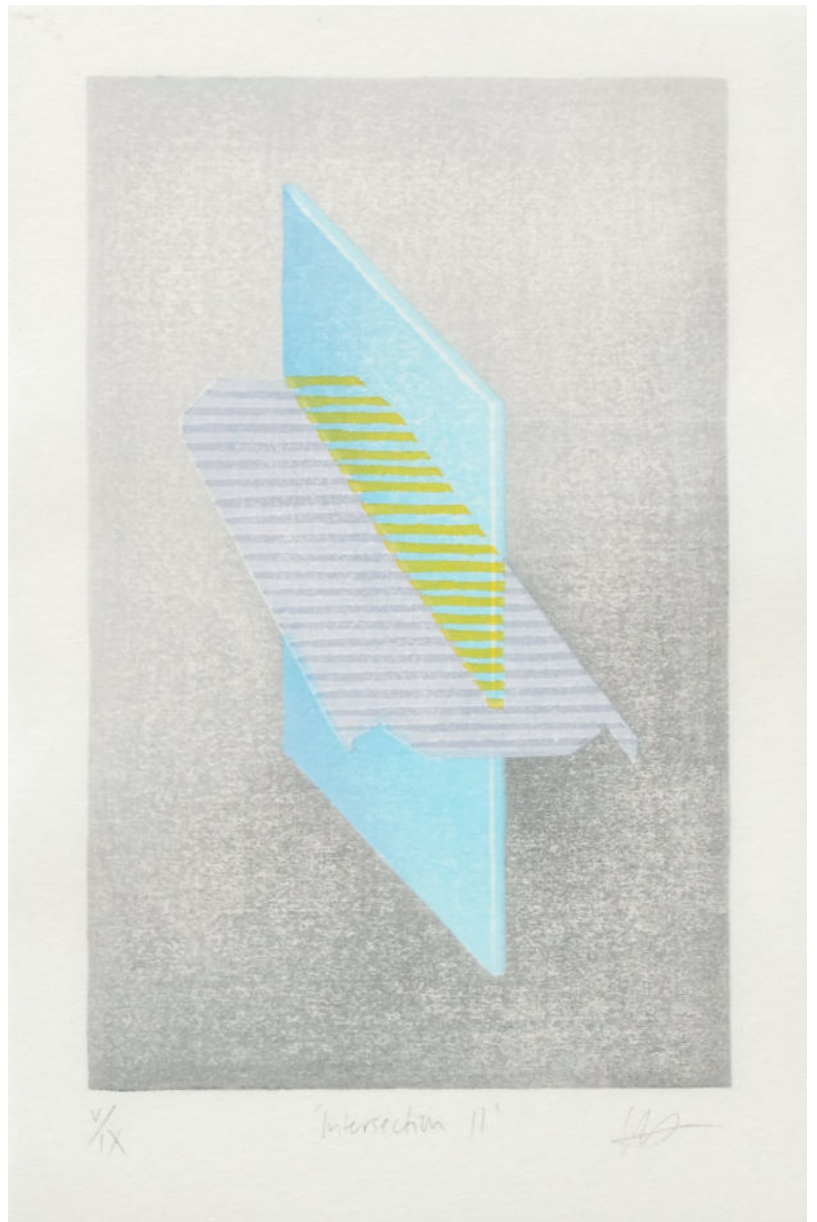
11/VI

Intersection I

[Signature]

Kathryn Desforges

Intersection I
Mokuhanga on washi, edition no. 3 of 8
2018.
31 x 39cm framed
£175



Kathryn Desforges

Intersection II
Mokuhanga on washi, edition no. 5 of 7
2018.
31 x 39cm framed
£175



1/5

'In it came, right up to
the edges'

[Signature]

Kathryn Desforges

In it came right up to the edges

**Wood lithograph and mokuhanga on washi, no. 1 of 5 varied edition
2020.**

27 x 31cm framed

£275



Anne Desmet RA

**Poolside Reflection (2006),
Wood engraving & chine collé,
10 x 9 cm.**

Framed: £450. Unframed: £250.

An image of Manchester's Victoria Baths.

A print from this edition is in the Whitworth collection



Anne Desmet RA

Radio City (Liverpool) (2014),

Wood engraving,

6.5 x 7.5 cm.

Framed: £220. Unframed: £120



Anne Desmet RA

**Angel and Book (2020),
Wood engraving,
9.7 x 7.4 cm.**

Framed: £450. Unframed: £250



Anne Desmet RA

**Angel with Laurel Wreath (2020),
Wood engraving,**

9.6 x 7.1 cm.

Framed: £450. Unframed: £250



Anne Desmet RA

**Angel Fragment (2020),
Wood engraving,
2.6 x 7 cm.**

Framed: £300. Unframed: £150



Julia Midgley RE

Criss Cross Quiz
Etching and Aquatint
45.5x49.5cm framed
£375 framed
£340 unframed



Julia Midgley RE

County Conundrum
Etching and Aquatint
41x46cm
61.5x71cm framed
£490 framed



Julia Midgley RE

Let's Dance
Etching and Aquatint
10x10cm
27x31cm framed
£190 framed
£165 unframed



Julia Midgley RE

Party Party
Etching and Aquatint no.31/40
41x46cm
66x66cm framed
£480 framed



Julia Midgley RE

**Bowler Hat
Etching and Aquatint A/P
56x67cm framed
£475 framed**



Lindsey Moran

Morning Light - Rijksmuseum

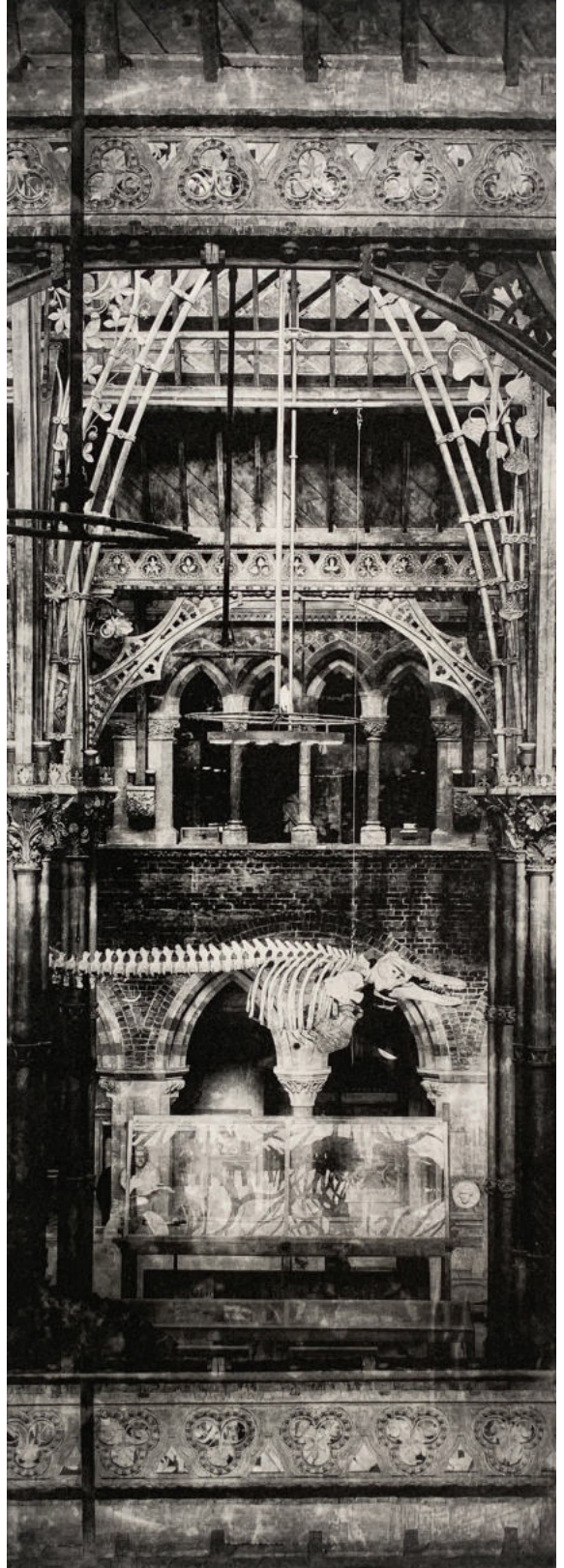
Photogravure

30x21cm

44x35cm framed

£245 framed

£195 unframed



Lindsey Moran

Reawaken II
Photogravure
42x26cm
56x29cm framed
£245 framed
£195 unframed



Lindsey Moran

Mastodon

Photogravure

21x10.5cm

35x24.5cm framed

£195 framed

£165 unframed



Nigel Morris

Untitled
Lino relief and Pochoir
30x40cm
£250 framed



Nigel Morris

Woven Grey
Lino relief and Pochoir
30x40cm
£250 framed



Nigel Morris

Woven Quin
Lino relief and Pochoir
30x40cm
£250 framed



John Pedder

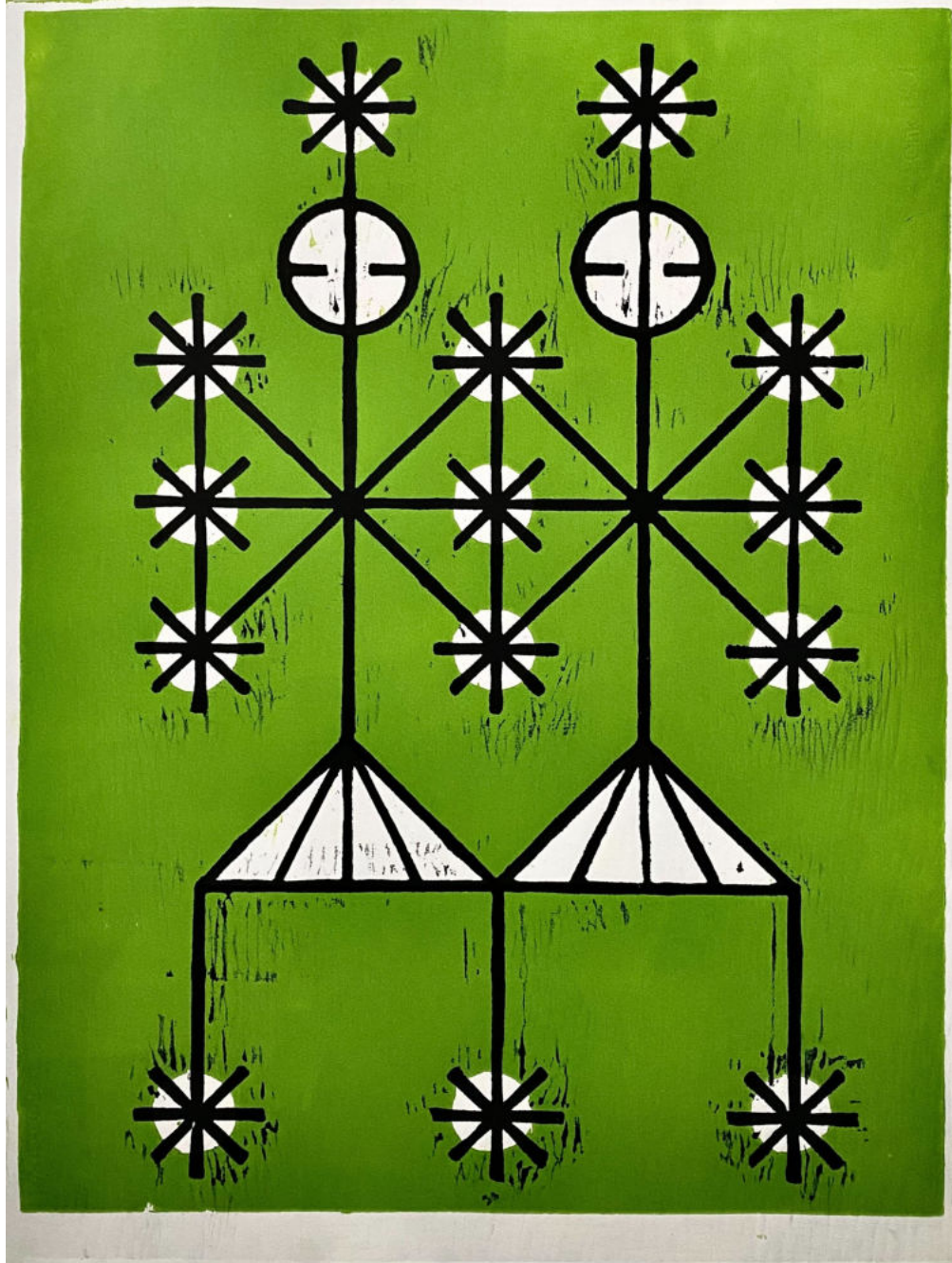
The Expectant Couple

Woodblock print

76x57cm

84.5x64cm framed

£220 framed. £120 unframed



John Pedder

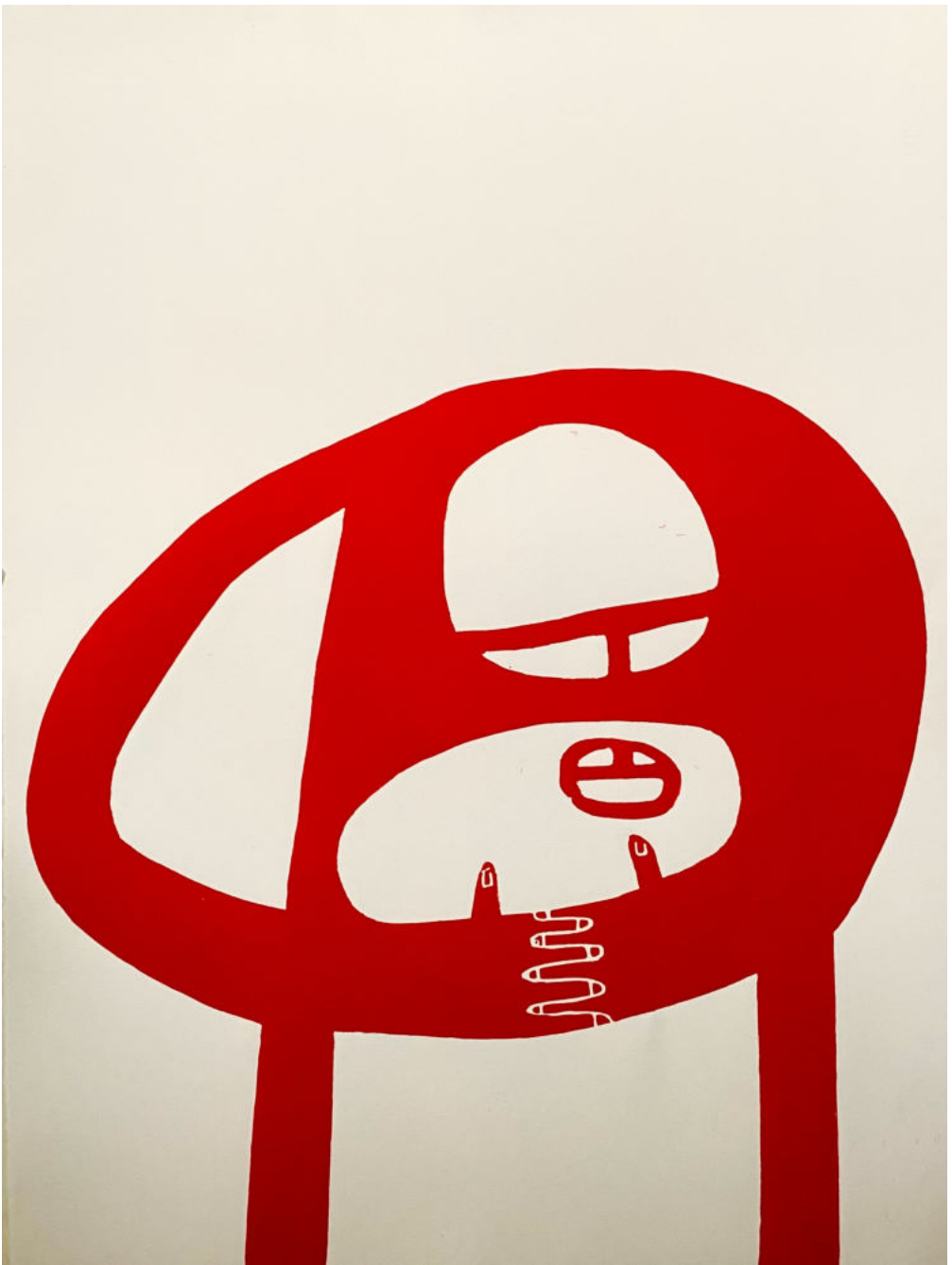
The Happiness Angels

Woodblock print

76x57cm

84.5x64cm framed

£220 framed. £120 unframed



John Pedder

Fatherhood

Woodblock print

76x57cm

84.5x64cm framed

£220 framed. £120 unframed



2/10 et

machine age i

cd

Clare Phelan

Machine Age i
Etching edition of 10
34x34cm unframed
40x40cm framed
£ 150



9/0 clv

machine age iii

cad

Clare Phelan

Machine Age iii
Etching edition of 10
34x34cm unframed
40x40cm framed
£ 150



5/10 5/10

machine age iv

ch

Clare Phelan

Machine Age iv
Etching edition of 10
34x34cm unframed
40x40cm framed
£ 150



KJ Pocock

Blast target: pvwkvhi8

Mixed media digital archival print on Hahnemühle

German Etching matt fine art paper

Edition: #1 of 25

24x 15cm

42x29.7cm framed

£145



KJ Pocock

The Shadows of the Lights

Mixed media digital archival print on Hahnemühle

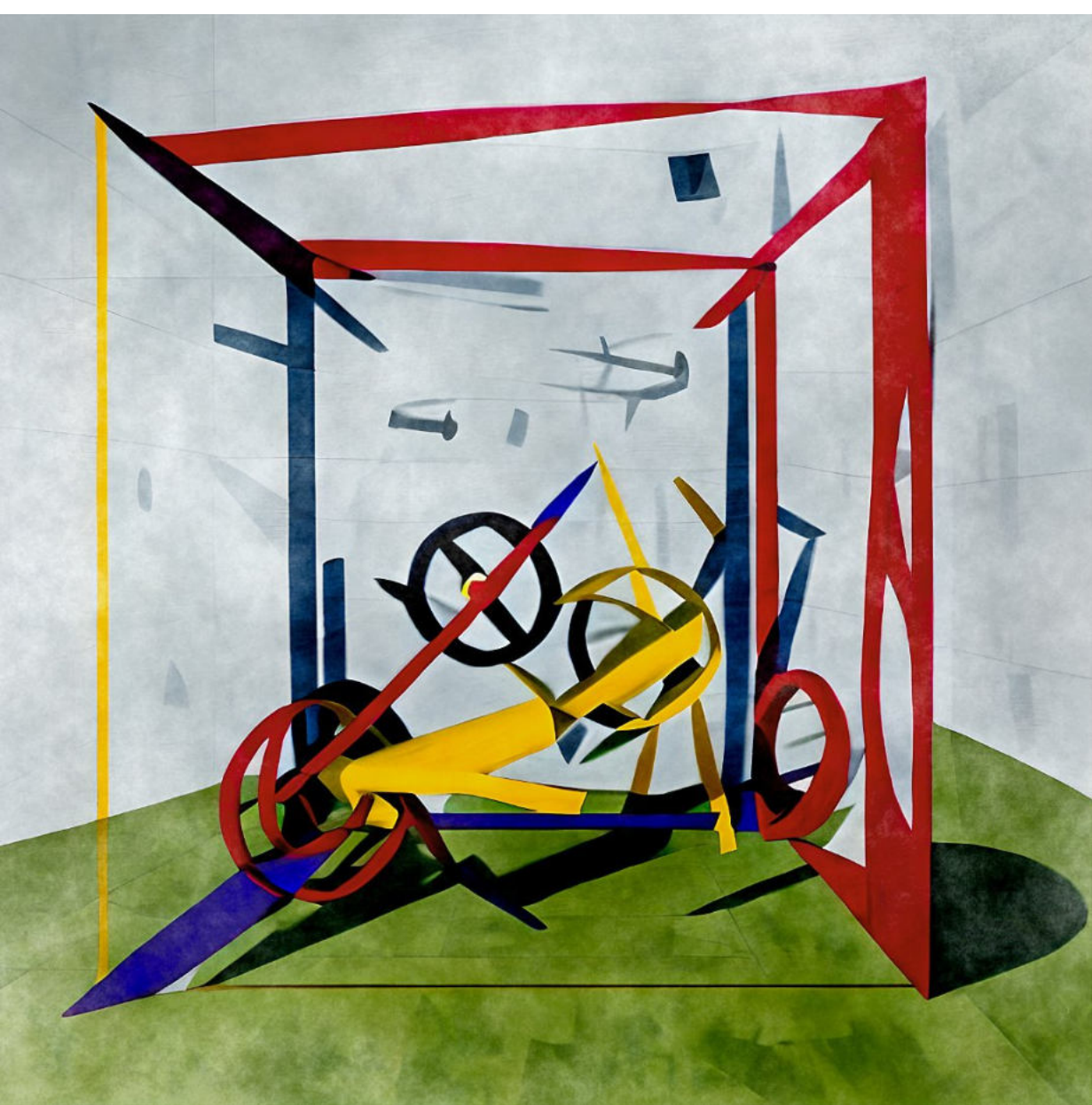
German Etching matt fine art paper

Edition: #1 of 25

24x 15cm

42x29.7cm framed

£145



KJ Pocock

The Old House and Garden

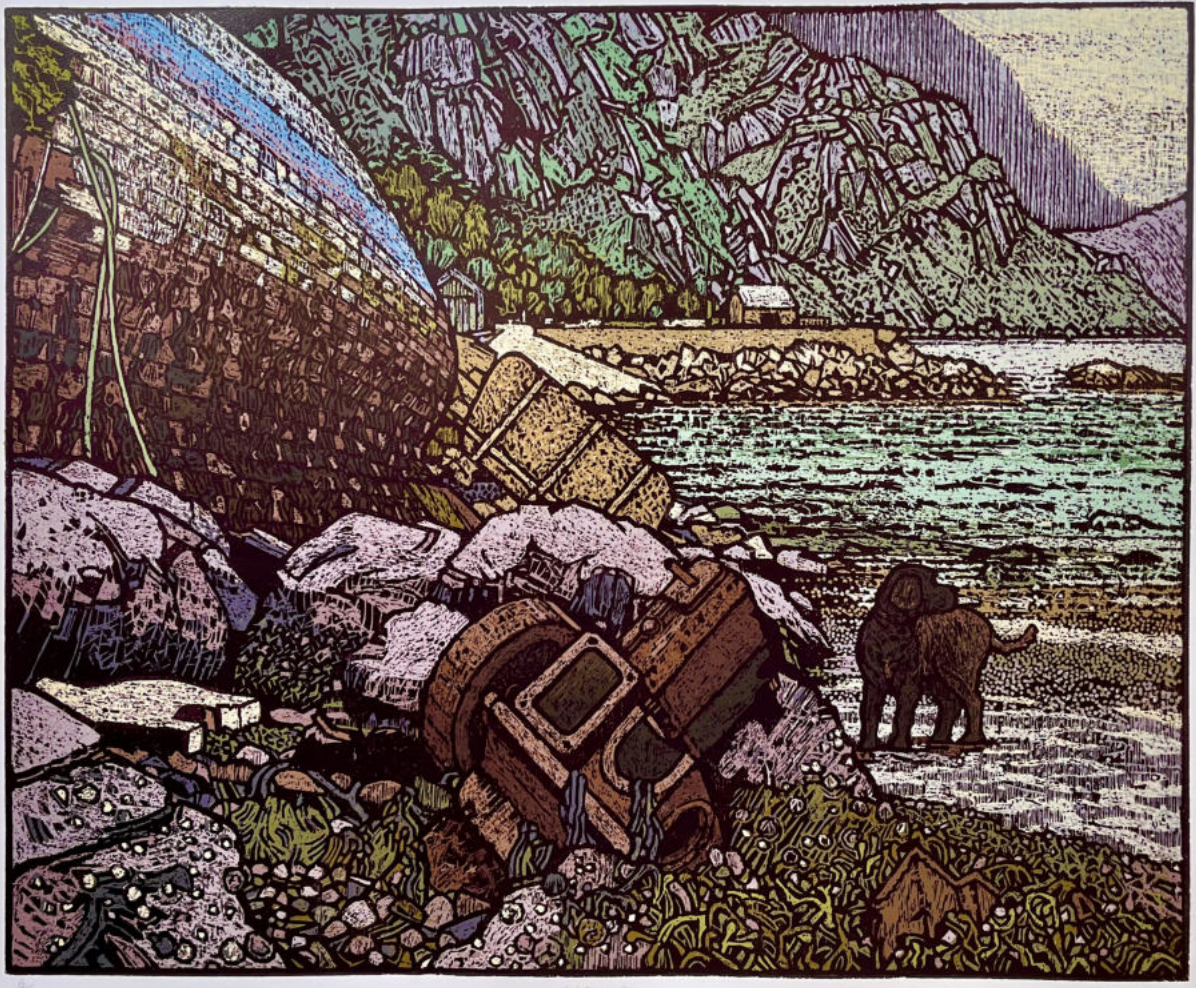
**Mixed media digital archival print on Hahnemühle German Etching
matt fine art paper**

Edition: #1 of 25

20x 20cm

42x29.7cm framed

£145



Anthony Ratcliffe MAFA

**Watermark
Woodcut print
85x70cm (frame105x90cm) edition of 6.
£800 framed £750 unframed**



Anthony Ratcliffe MAFA

Waterline

Woodcut print

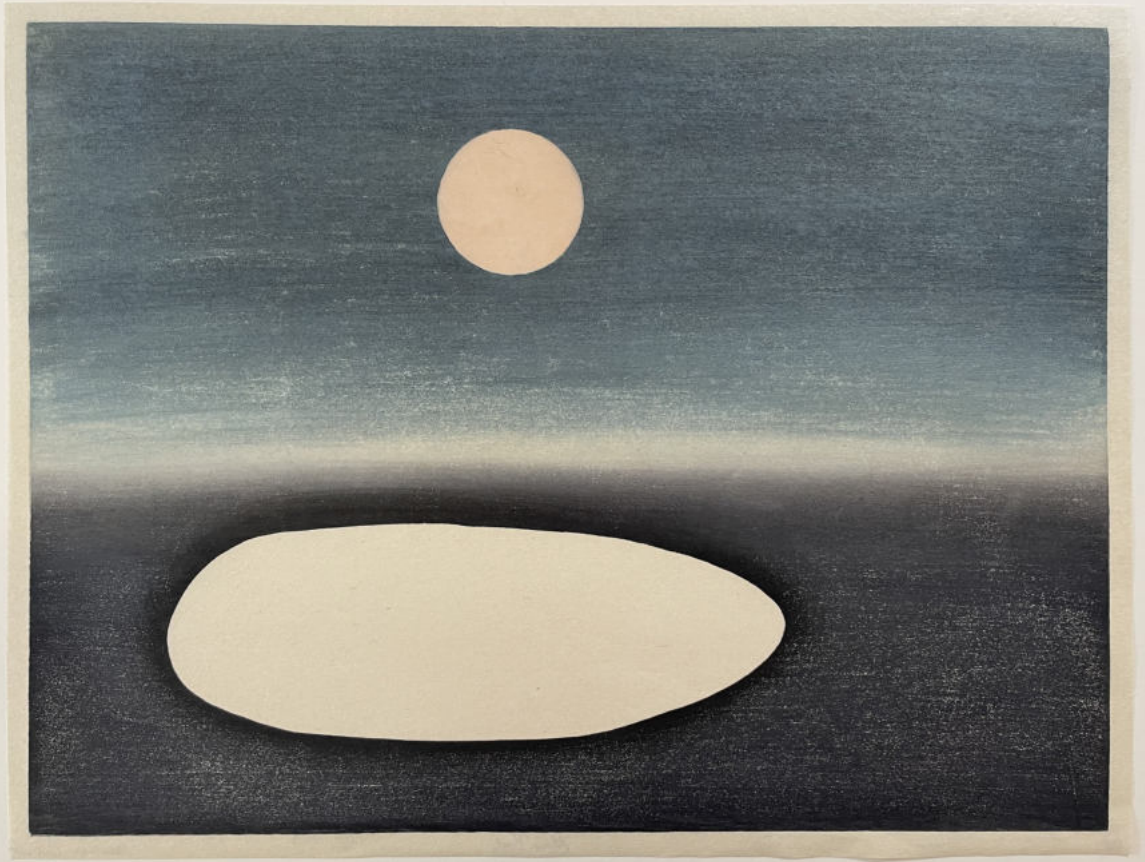
85x70cm (frame 105x90cm) edition of 6.

£800 framed £750 unframed



Lucy May Schofield

The Path
Mokuhanga on washi,
30x22cm edition of 2 with 1 AP, 2022
£260 framed



Lucy May Schofield

Moon Pool

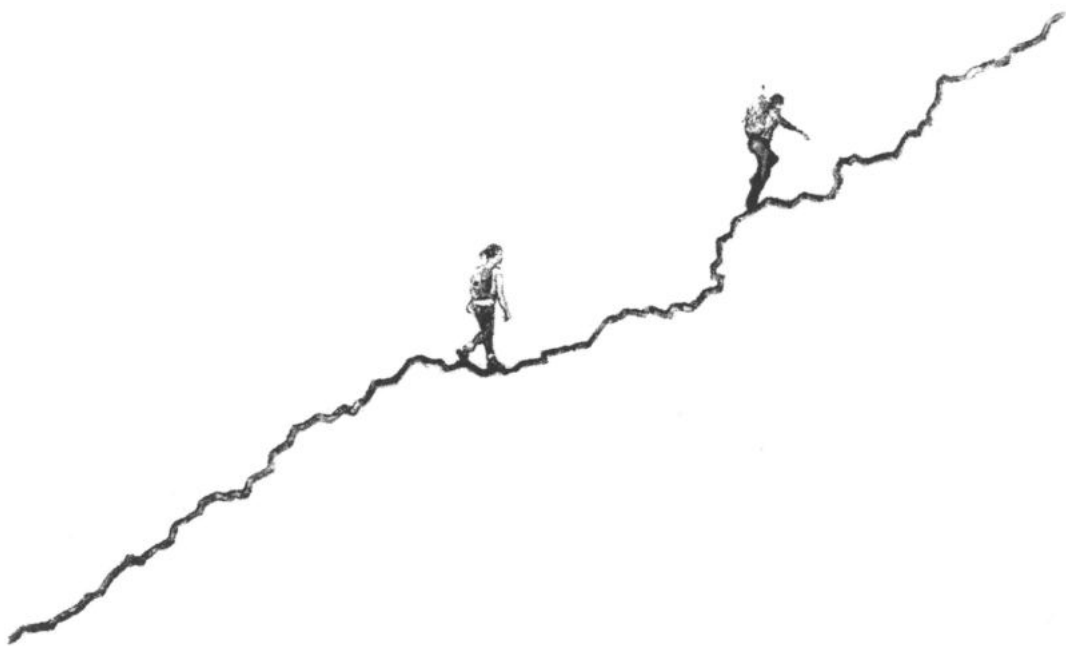
**Mokuhanga and chin colle on washi
63x48cm edition of 6 with 3 AP's, 2022.**

£600 framed.



Lucy May Schofield

**If I ever knew you
Mokuhanga and chine colle on washi,
36x29cm Edition of 6, 2023.
£350 framed**



Alan Stones

Climb XI

Lithograph

17x22cm

33.6x38.3cm framed

£140 framed



Alan Stones

Landing
Lithograph
31.5x39.6cm
52x59.7cm framed
£220 framed



Alan Stones

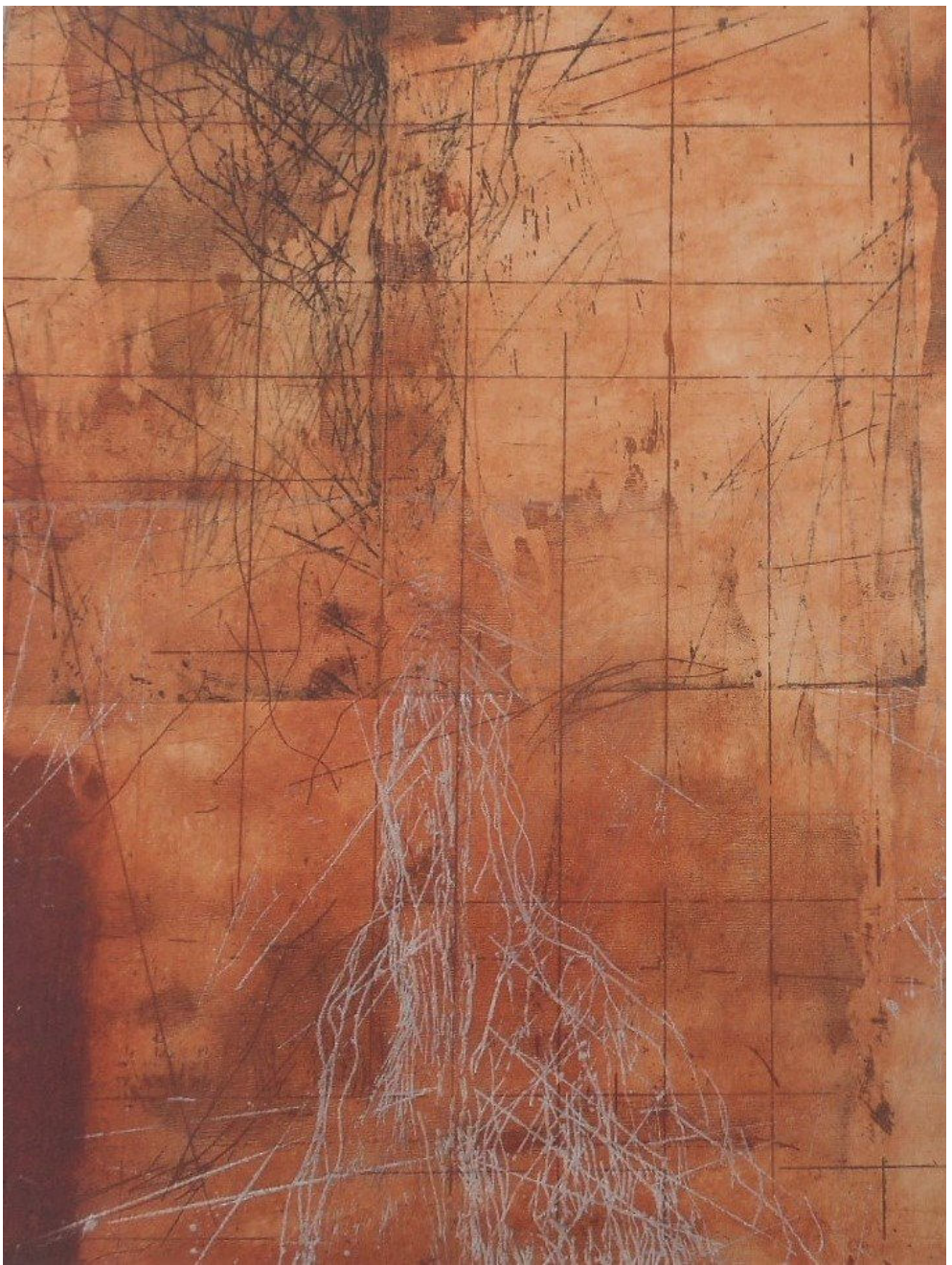
Viewpoint II

Lithograph

31.5x39.6cm

52x59.7cm framed

£240 framed



Theresa Taylor

Cascade 1

**Unique 2-plate Zinc aquatint etching, carborundum, monotype
On Fabriano Rosaspina 285gsm, mounted on Magnani Pescia 300gsm**

57.5x48cm

£420 framed



TheresaTaylor

Well Worn Fragments

**Triptych, zinc aquatint etching on Magnani Pescia, Fabriano 300gsm
(variable edition of 4)**

69x56cm

£455 framed



TheresaTaylor

Bringing There Into Proximity I
Diptych, Zinc aquatint etching on Magnani Pescia, Fabriano 300gsm
(small variable edition)

75x46cm

£470 framed

Saul Hay Gallery

Railway Cottage
Off Castle Street
Manchester
M3 4LZ

0161 222 4800