



Saul Hay  
Gallery

# TEN

A retrospective of ten years  
of work by Stephen Snoddy

3<sup>rd</sup> to 25<sup>th</sup> June 2023

**Saul Hay Gallery is very proud to present**

**TEN – A retrospective of ten years of the work of Stephen Snoddy**

**Please join us at our Preview Evening on**

**Friday 2<sup>nd</sup> June 5 to 9pm**

**The exhibition continues until Sunday 25<sup>th</sup> June  
and is open 10.30 to 6.00 Tuesday to Saturday and 10.30 to 5 on Sundays**

**Join us for an evening in conversation with the artist on  
Thursday 17<sup>th</sup> June at 7.30**

Stephen Snoddy is currently the Director of The New Art Gallery, Walsall and is one of the UK's most respected Museum Directors having curated many exhibitions at, among others, Serpentine Gallery, The Whitechapel, Camden Arts Centre, Leeds City Art Gallery, Calouste Gulbenkian Foundation in Lisbon, Irish Museum of Modern Art in Dublin and The Haags Gemeentemuseum. He has worked at Arnolfini Gallery in Bristol, Cornerhouse in Manchester, Southampton City Art Gallery, Milton Keynes Gallery and Baltic in Gateshead.

Stephen Snoddy says: "I am delighted to have the opportunity to bring ten years of work under one roof. It will give me and visitors the chance to look at interconnections, conversations and dialogues between the different scales, formats, mediums and techniques of the work."

Snoddy has also lectured at a number of art colleges and was Visiting Professor from 2019 until 2022 at Manchester School of Art . He is an Honorary Member of the Royal Ulster Society and was on the Visual Arts Committee of the British Council. In 2011, he visited Jerusalem and the Palestinian Territories to advise on the development of a potential new Palestinian Museum of Art.

“Having been working with Stephen since 2017 we are delighted to bring to Saul Hay Gallery his first Manchester solo exhibition and to celebrate ten years since Stephen returned to his studio practice. Stephen's artistic process is a fascinating one whereby through, on the face of it a fairly strict formal discipline, he produces endlessly varied works that are carefully structured and contemplative.”

Ian Hay, Director of Saul Hay Gallery



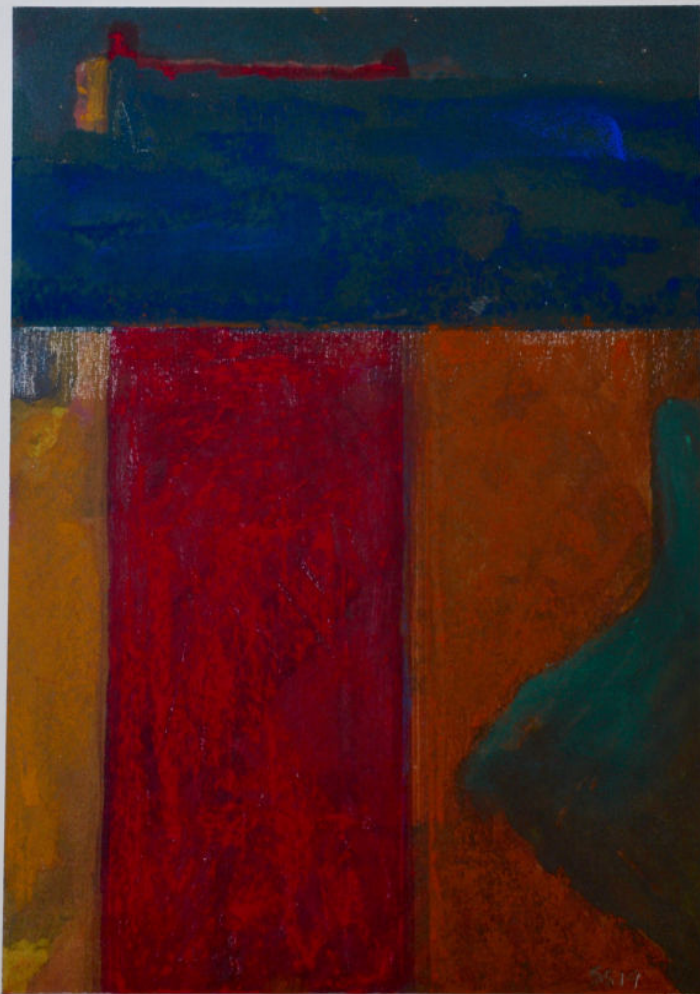
**Pastel 50**  
**Oil pastel on paper**  
**50x70cm**  
**2020**  
**£895**



**Pastel 86**  
**Oil pastels on paper**  
**33x24cm**  
**2021**  
**£350**

**Pastel 88**  
**Oil pastels on paper**  
**33x24cm**  
**2021**  
**£350**





**Pastel 30**  
**Oil pastels on paper**  
**25x19cm**  
**2019**  
**£295**



**Untitled 2**  
**Acrylic on paper mounted on marine board**  
**33x23cm**  
**2013**  
**£250**





**KP 7**  
**Gouache on Khadi paper**  
**29.7x21cm**  
**2021**  
**£295**



**KP 16**  
**Gouache on Khadi paper**  
**42x29.7cm**  
**2021**  
**£395**



**Saul Hay Gallery offers the 'Own Art' scheme, which allows you to split payments over ten months interest-free, making quality art more accessible.**

**For example, a £500 artwork would cost only £50 per month over ten months.**



**Untitled 131  
(after Matisse)  
Acrylic on paper  
mounted on  
marine board  
47x58cm  
2017  
£1250**



**Untitled 132**  
**(after Matisse)**  
**Acrylic on paper**  
**mounted on**  
**marine board**  
**47x58cm**  
**2017**  
**£1250**



**Untitled 195**  
**Acrylic on gesso panel**  
**46x35cm**  
**2020**  
**£450**



**Window 2 (64)**  
**Acrylic on paper mounted on marine board**  
**67x47cm**  
**2014**  
**£950**





**Window 10 (72)**  
**Acrylic on paper mounted on marine board**  
**67x47cm**  
**2015**  
**£950**

**Untitled 108**  
**Acrylic on paper mounted**  
**on marine board**  
**40x33cm**  
**2015**  
**£850**





Untitled 235 - 238  
Acrylic on gesso panel  
23x30.5cm  
2020  
£450 each



**Untitled 236 (interior)**  
**Acrylic on gesso panel**  
**23x30.5cm**  
**2020**  
**£450**



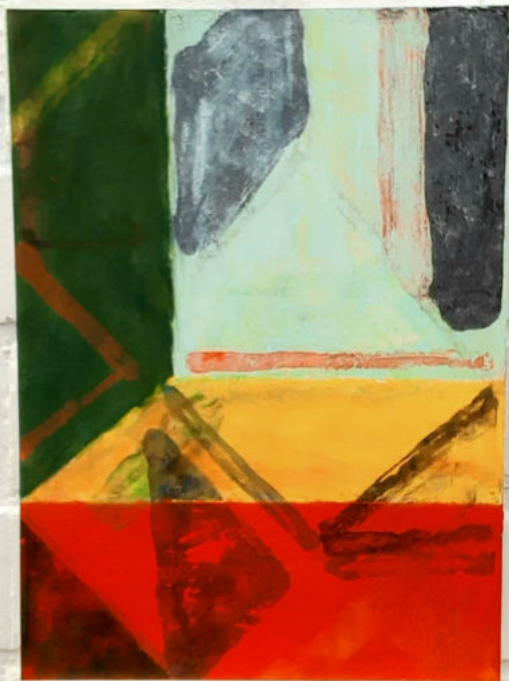
**Untitled 62**  
**Acrylic on paper**  
**mounted on marine board**  
**46.6x66.6cm**  
**2014**  
**£995**



**Pastel 63**  
**Oil pastels on paper**  
**33x24cm**  
**2023**  
**£350**

**Pastel 64**  
**Oil pastels on paper**  
**33x24cm**  
**2023**  
**£350**



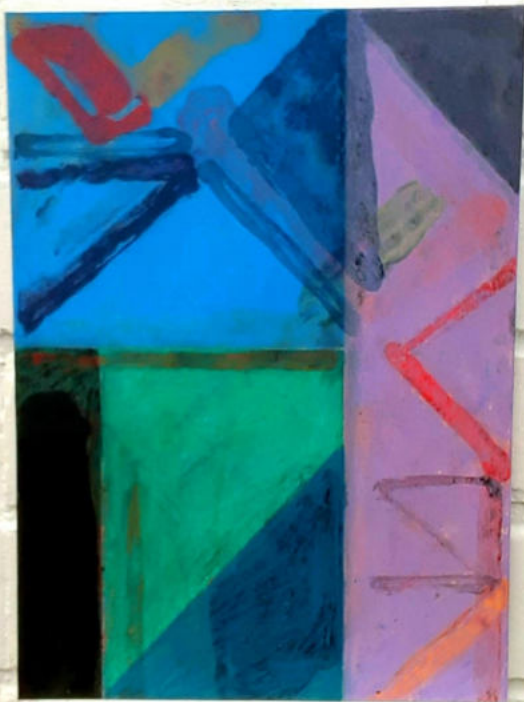


**Pastel 65**  
**Oil pastels on paper**  
**33x24cm**  
**2023**  
**£350**



**Pastel 66**  
**Oil pastels on paper**  
**33x24cm**  
**2023**  
**£350**

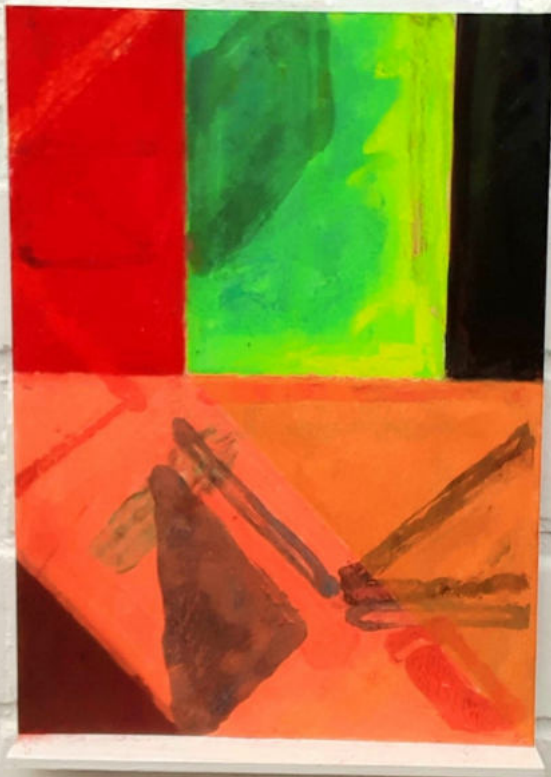




**Pastel 67**  
**Oil pastels on paper**  
**33x24cm**  
**2023**  
**£350**

**Pastel 68**  
**Oil pastels on paper**  
**33x24cm**  
**2023**  
**£350**





**Pastel 69**  
**Oil pastels on paper**  
**33x24cm**  
**2023**  
**£350**

**Pastel 70**  
**Oil pastels on paper**  
**33x24cm**  
**2023**  
**£350**





**Pastel 71**  
**Oil pastels on paper**  
**33x24cm**  
**2023**  
**£350**

**Pastel 72**  
**Oil pastels on paper**  
**33x24cm**  
**2023**  
**£350**





**Pastel 73**  
**Oil pastels on paper**  
**33x24cm**  
**2023**  
**£350**



**Pastel 74**  
**Oil pastels on paper**  
**33x24cm**  
**2023**  
**£350**



---

**Saul Hay  
Gallery**

---

Railway Cottage  
Off Castle Street  
Manchester  
M3 4LZ  
0161 222 4800